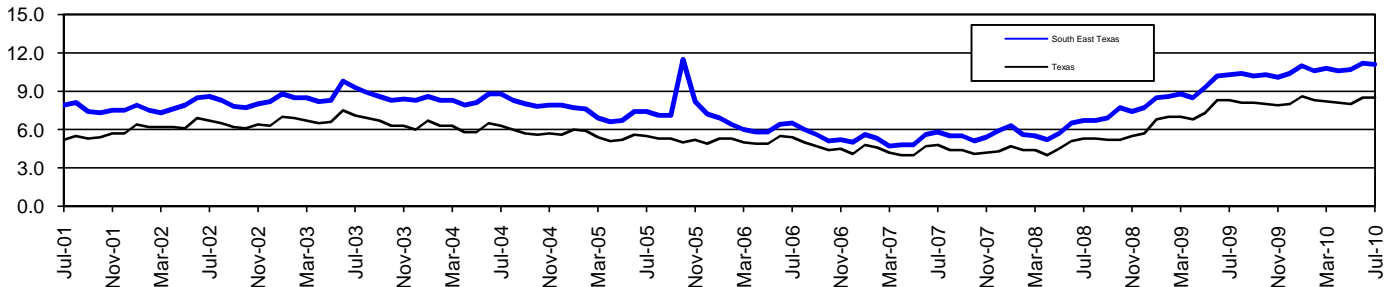


South East Texas Workforce Development Area*

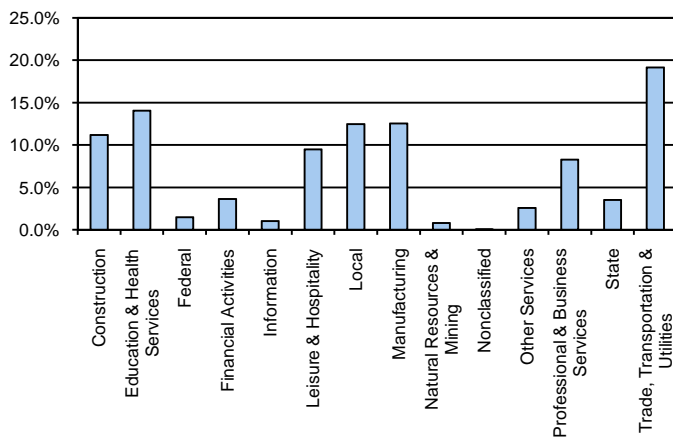
July 2010

South East Texas WDA					Texas				
	CLF	Employed	Unemployed	Rate		CLF	Employed	Unemployed	Rate
Jul-10	186,489	165,772	20,717	11.1	Jul-10	12,206,414	11,168,290	1,038,124	8.5
Jun-10	186,989	166,088	20,901	11.2	Jun-10	12,176,656	11,136,577	1,040,079	8.5
Jul-09	185,306	166,161	19,145	10.3	Jul-09	12,063,064	11,063,872	999,192	8.3

Historical Unemployment Rates



South East Texas WDA Industry Composition 1st Quarter 2010



Total WDA Claims

	Jul-10	Jun-10	Jul-09	OTY
Initial	2,291	2,555	2,757	-466
Continued	11,376	12,223	15,589	-4,213
Continued Claims for the Week of the 12th				
Continued	770	707	1,258	-488

Texas Unemployment Insurance Claims Filed

	Jul-10	Jun-10	Jul-09	OTY
Initial	95,154	103,018	112,737	-17,583
Continued	991,661	994,447	1,340,360	-348,699
Continued Claims for the Week of the 12th				
Continued	241,794	221,742	313,647	-71,853

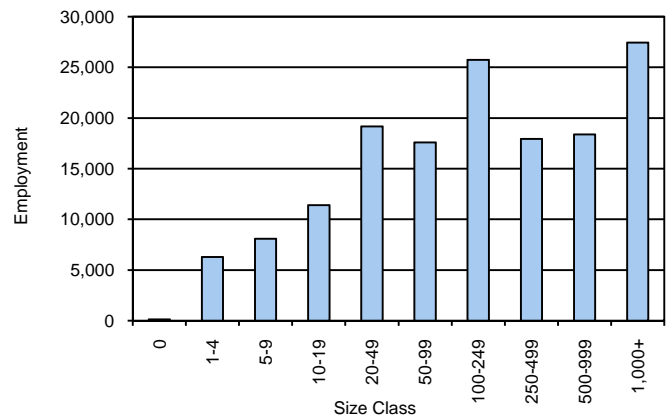
South East Texas WDA Average Weekly Wage

	South East Tx	WDA Qtr. Chg.	Texas
1st Quarter 2010	\$820.34	-\$66.92	\$893.19
4th Quarter 2009	\$887.26	WDA OTY Chg.	\$944.14
1st Quarter 2009	\$833.80	-\$13.46	\$886.34

NAICS Covered Employment Quarterly Data 1st Quarter 2010

SUPER SECTOR	Employment	Change	
		Quarter	Year
Construction	16,996	359	-1,584
Education & Health Services	21,383	-199	293
Federal	2,236	81	144
Financial Activities	5,491	-52	-100
Information	1,506	-40	-297
Leisure & Hospitality	14,399	-271	-190
Local	18,928	416	1,046
Manufacturing	19,050	99	-2,253
Natural Resources & Mining	1,213	-240	-409
Nonclassified	37	15	-8
Other Services	3,908	-84	-150
Professional & Business Services	12,548	-5	-1,779
State	5,316	-99	-133
Trade, Transportation & Utilities	29,158	-1,040	-1,484
TOTAL	152,169	-1,060	-6,904

Size Class Employment Composition 1st Quarter 2010



*Counties in WDA: Hardin, Jefferson, & Orange